

Product Catalogue



Thermoplastic Splint **BY WOOSAM MEDICAL**



WOOSAM MEDICAL CO., LTD.

HEAD OFFICE: 89-25, Tongil-ro 642beon-gil, Wollong-myeon, Paju-si, Gyeonggi-do, 10945, Rep. of Korea
SEOUL OFFICE: 4, Daehak-ro 12-gil, Jongno-gu, Seoul, 03086, Rep. of Korea

T +82 2 743 0781
F +82 2 744 4779
E jade@woosam.co.kr

www.woosam.co.kr

Contents

YOGIPS (PREMOLD type).....	2
YOGIPS (FLAT type).....	10
ORDERING INFORMATION.....	15
HYGIA CAST.....	16
SOFTPOLY CAST.....	18
HYGIA BELT SPLINT.....	18
HYGIA SPLINT.....	22

Thumb hole radial splint



INDICATION: Carpal tunnel syndrome, Tendonitis, Arthritis, Strains

This has high compression features and provides excellent support to injured wrist and allows full function of the fingers and thumb at the same time as protecting the wrist. Provides radial and ulnar styloid relief.

Article Number	Size	Side	Order#
HSA-200	LARGE	RIGHT	M200011
HSA-200	LARGE	LEFT	M200012
HSA-200	MEDIUM	RIGHT	M200021
HSA-200	MEDIUM	LEFT	M200022

Thumb spica radial splint



INDICATION: Post scaphoid fracture, Carpal tunnel syndrome, Skier's thumb, Tendinitis, Post-surgical repair

Offering excellent support and compression to the wrist, CMC and MCP joints.

Article Number	Size	Side	Order#
HSA-220	LARGE	RIGHT	M220011
HSA-220	LARGE	LEFT	M220012
HSA-220	MEDIUM	RIGHT	M220021
HSA-220	MEDIUM	LEFT	M220022
HSA-220	SMALL	RIGHT	M220031
HSA-220	SMALL	LEFT	M220032

** All products are premold type and include straps.

Volar splint



INDICATION: Immobilisation of the wrist,
Distal radius, ulna and carpals, excluding scaphoid

Rehabilitation phase after hand surgery
First aid and first care: transitory fixation before or
just after surgery

Article Number	Size	Side	Order#
HSA-300V	LARGE	RIGHT	M300111
HSA-300V	LARGE	LEFT	M300112
HSA-300V	MEDIUM	RIGHT	M300121
HSA-300V	MEDIUM	LEFT	M300122
HSA-300V	SMALL	RIGHT	M300131
HSA-300V	SMALL	LEFT	M300132

Ulnar gutter splint



INDICATION: Immobilisation of the wrist,
Distorsions, Stable fractures, after surgery

Conservative treatment of tendonitis/
tendovaginitis (without involvement of
the thumb) as well as degenerative or
inflammatory conditions of the wrist
Adjuvant therapy of reflex sympathetic
dystrophy

Article Number	Size	Side	Order#
HSA-300G	LARGE	RIGHT	M300211
HSA-300G	LARGE	LEFT	M300212
HSA-300G	MEDIUM	RIGHT	M300221
HSA-300G	MEDIUM	LEFT	M300222
HSA-300G	SMALL	RIGHT	M300231
HSA-300G	SMALL	LEFT	M300232

** All products are premold type and include straps.

YOGIPS Premold type

Dorsal splint

INDICATION: Carpal tunnel syndrome, Tendon injuries, Wrist sprains

Dorsal design for increased patient compliance.

First aid and first care: transitory fixation before or just after surgery

Conservative treatment in tendonitis, inflammation and degenerative diseases of the wrist, even as resting splints



Article Number	Size	Side	Order#
HSA-300D	LARGE	RIGHT	M300311
HSA-300D	LARGE	LEFT	M300312
HSA-300D	MEDIUM	RIGHT	M300321
HSA-300D	MEDIUM	LEFT	M300322
HSA-300D	SMALL	RIGHT	M300331
HSA-300D	SMALL	LEFT	M300332

Finger splint

INDICATION: Finger sprains, Wrist sprains

To immobilize the finger sprains, strains, minor fractures and post-perative alignment



Article Number	Size	Side	Order#
HFS-1000	UNIVERSAL	UNIVERSAL	M100000

** All products are premold type and include straps.

Resting pan mitt splint

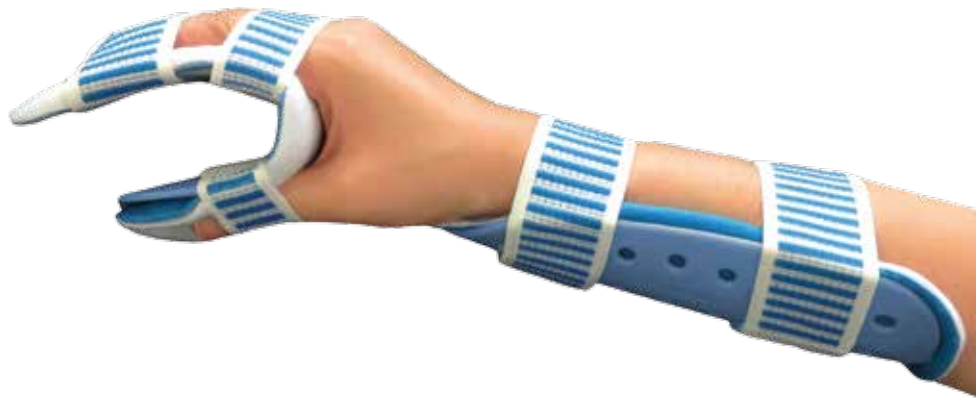
INDICATION: Positions wrist in neutral with fingers in partial flexion MCP or CMC joint of the thumb

Specially suited for people with arthritis who require support of the MCP or CMC joint of the thumb.
Splint may be used volarly or dorsally to splint hypertonic hands.



Article Number	Size	Side	Order#
HSA-230	UNIVERSAL	RIGHT	M230001
HSA-230	UNIVERSAL	LEFT	M230002

Functional position palmar splint



INDICATION: Rheumatoid arthritis, Contracture in flexion or hyperextension of the wrist, including contracted fist.

Contracture of the hand with or without radial or ulnar deviations of the hand.
It has a wrist strap to maintain it in the suitable position and to secure a progressive stretching.
The adjustment of the thumb correction can be varied.

Article Number	Size	Side	Order#
HSA-320	LARGE	RIGHT	M320011
HSA-320	LARGE	LEFT	M320012
HSA-320	MEDIUM	RIGHT	M320021
HSA-320	MEDIUM	LEFT	M320022
HSA-320	SMALL	RIGHT	M320031
HSA-320	SMALL	LEFT	M320032

** All products are premold type and include straps.

Wrist neutral palmar splint



INDICATION: Arthritic conditions, Post reconstructive surgery, Sprains/ strains, Tendinitis, Post wrist fracture

This provides effective circumferential compression and support to the wrist whilst allowing full thumb and finger motion. Useful as a step-down splint in later stage rehab or to encourage function with patients who struggle with transition from immobilization to movement due to pain or anxiety.

Article Number	Size	Side	Order#
HSA-420	LARGE	RIGHT	M420011
HSA-420	LARGE	LEFT	M420012
HSA-420	MEDIUM	RIGHT	M420021
HSA-420	MEDIUM	LEFT	M420022
HSA-420	SMALL	RIGHT	M420031
HSA-420	SMALL	LEFT	M420032

Forearm humerus splint



Article Number	Size	Side	Order#
HLA-500	LARGE	UNIVERSAL	M500010
HLA-500	MEDIUM	UNIVERSAL	M500020
HLA-500	SMALL	UNIVERSAL	M500030

INDICATION: Fixation of the region of the elbow following injuries and surgery

Post-traumatic immobilisation of the elbow joint, e.g. condition after bursectomy, sulcus ulnaris, descending tendopathies

** All products are premold type and include straps.

Tibial splint (below knee)

INDICATION: Lower leg, ankle and foot

Designed to increase stability and help decrease pain

Provides a protected range of motion following trauma or post-operative procedures



Article Number	Size	Side	Order#
HSL-600	LARGE	UNIVERSAL	M600010
HSL-600	MEDIUM	UNIVERSAL	M600020
HSL-600	SMALL	UNIVERSAL	M600030
HSL-600	X-SMALL	UNIVERSAL	M600040

Ankle splint

INDICATION: Acute ankle injuries

Traditional stirrup design provides compression and promotes circulation to reduce swelling.

Soft pads included for combined therapy

Fits easily into most shoes

Universal sizing reduces inventory on hand



Article Number	Size	Side	Order#
HSL-640	UNIVERSAL	UNIVERSAL	M640000

** All products are premold type and include straps.

Femoral splint (above knee)



INDICATION: Shaft fractures of the femur and for immobilisation of the knee

May be molded to the contour of the limb

Article Number	Size	Side	Order#
HLL-700	LARGE	UNIVERSAL	M700010
HLL-700	MEDIUM	UNIVERSAL	M700020
HLL-700	SMALL	UNIVERSAL	M700030
HLL-700	X-SMALL	UNIVERSAL	M700040

Cylinder splint



INDICATION: Postsurgical or posttraumatic immobilisation

Allowing adjustment to a wide range of calf, thigh and knee circumferences
The soft padding stays are shaped for a greater comfort and fitting

Article Number	Size	Side	Order#
HLL-740	LARGE	UNIVERSAL	M740010
HLL-740	MEDIUM	UNIVERSAL	M740020
HLL-740	SMALL	UNIVERSAL	M740030

** All products are premold type and include straps.

Features

Comfortable thanks to the thick polarfleece padding
X-Ray transparent
Easy to apply, the system of adhesive straps
Not made with latex

Strong point

1. They are easy to operate and comfortable to wear, making them ideal for a patient who requires stability following a sprain, stress fracture, or surgery.
2. The inner fleece also helps wick away moisture from the skin to allow greater patient comfort.
3. Polarfleece is a comfortable and durable material and has unique properties that keep the patient's wrist and hand at the optimal temperature.
4. Ergonomically contoured padding on the inside of the splint provides the best fit and most comfort.
5. Fully adjustable strapping for customized fitting
6. Breathable and soft material padding

Care

The splint will lose its shape in temperatures over 194°F (90°C).
It should be kept away from sources of heat such as ovens, hot water, sunny car windows and open flames.

Modification

Yogips can be modified for a better fit using heat gun.



These splints, which are made from (1.4~5.0mm) Thermoplastic splinting material and the polarfleece padding, can be modified for a better fit.

Heat the area to be modified using a heat gun that is heated to 194°F (90°C) for 2 minutes or until pliable.

Do not heat any of the splints in the hot water, because the polarfleece padding is wet.

Thumb hole radial splint



INDICATION: Carpal tunnel syndrome, Tendonitis, Arthritis, Strains

This has high compression features and provides excellent support to injured wrist and allows full function of the fingers and thumb at the same time as protecting the wrist. Provides radial and ulnar styloid relief.

Article Number	Size	Side	Order#
HSA-200	UNIVERSAL	RIGHT	F200001
HSA-200	UNIVERSAL	LEFT	F200002

Thumb spica radial splint



INDICATION: Post scaphoid fracture, Carpal tunnel syndrome, Skier's thumb, Tendinitis, Post-surgical repair

Offering excellent support and compression to the wrist, CMC and MCP joints.

Article Number	Size	Side	Order#
HSA-220	LARGE	RIGHT	F220011
HSA-220	LARGE	LEFT	F220012
HSA-220	MEDIUM	RIGHT	F220021
HSA-220	MEDIUM	LEFT	F220022
HSA-220	SMALL	RIGHT	F220031
HSA-220	SMALL	LEFT	F220032

** All products are flat and pre-cut type.



Volar splint



Dorsal splint



Ulnar gutter splint

INDICATION: Immobilisation of the wrist,
Distal radius, ulna and carpals, excluding scaphoid,
Carpal tunnel syndrome, Tendon injuries, after surgery

Conservative treatment of tendonitis/ tendovaginitis (without involvement of the thumb)
as well as degenerative or inflammatory conditions of the wrist
Adjuvant therapy of reflex sympathetic dystrophy

First aid and first care: transitory fixation before or just after surgery
Conservative treatment in tendonitis, inflammation and
degenerative diseases of the wrist, even as resting splints

Article Number	Size	Side	Order#
HSA-300	LARGE	UNIVERSAL	F300010
HSA-300	MEDIUM	UNIVERSAL	F300020
HSA-300	SMALL	UNIVERSAL	F300030

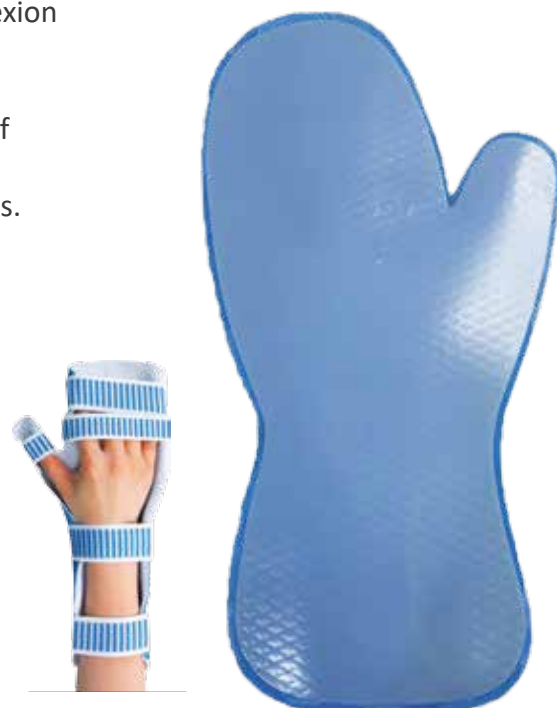
** All products are flat and pre-cut type.

Resting pan mitt splint

INDICATION: Positions wrist in neutral with fingers in partial flexion
MCP or CMC joint of the thumb

Specially suited for people with arthritis who require support of the MCP or CMC joint of the thumb.
Splint may be used volarly or dorsally to splint hypertonic hands.

Article Number	Size	Side	Order#
HSA-230	UNIVERSAL	RIGHT	F230001
HSA-230	UNIVERSAL	LEFT	F230002



Finger splint

INDICATION: Finger sprains, Wrist sprains

To immobilize the finger sprains, strains, minor fractures and post-operative alignment



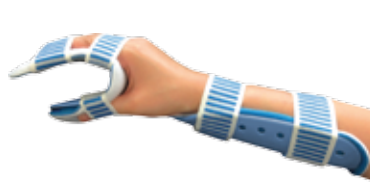
Article Number	Size	Side	Order#
HFS-1000	UNIVERSAL	UNIVERSAL	F100000

** All products are flat and pre-cut type.

Functional position palmar splint

INDICATION: Rheumatoid arthritis,
Contracture in flexion or hyperextension
of the wrist, including contracted fist.

Contracture of the hand with or without radial
or ulnar deviations of the hand.
It has a wrist strap to maintain it in the suitable
position and to secure a progressive stretching.
The adjustment of the thumb correction can be varied.



Article Number	Size	Side	Order#
HSA-320	LARGE	RIGHT	F320011
HSA-320	LARGE	LEFT	F320012
HSA-320	MEDIUM	RIGHT	F320021
HSA-320	MEDIUM	LEFT	F320022
HSA-320	SMALL	RIGHT	F320031
HSA-320	SMALL	LEFT	F320032

Wrist neutral palmar splint

INDICATION: Arthritic conditions, Post reconstructive surgery,
Sprains/ strains, Tendinitis, Post wrist fracture

This provides effective circumferential compression and support to
the wrist whilst allowing full thumb and finger motion.
Useful as a step-down splint in later stage rehab or to encourage
function with patients who struggle with transition from immobilization
to movement due to pain or anxiety.

Article Number	Size	Side	Order#
HSA-420	LARGE	RIGHT	F420011
HSA-420	LARGE	LEFT	F420012
HSA-420	MEDIUM	RIGHT	F420021
HSA-420	MEDIUM	LEFT	F420022
HSA-420	SMALL	RIGHT	F420031
HSA-420	SMALL	LEFT	F420032



** All products are flat and pre-cut type.

Features

Comfortable thanks to the thick polarfleece padding
X-Ray transparent
Easy to apply, the system of adhesive straps
Not made with latex

Strong point

1. They are easy to operate and comfortable to wear, making them ideal for a patient who requires stability following a sprain, stress fracture, or surgery.
2. The inner fleece also helps wick away moisture from the skin to allow greater patient comfort.
3. Polarfleece is a comfortable and durable material and has unique properties that keep the patient's wrist and hand at the optimal temperature.
4. Ergonomically contoured padding on the inside of the splint provides the best fit and most comfort.
5. Fully adjustable strapping for customized fitting
6. Breathable and soft material padding

Care

The splint will lose its shape in temperatures over 194°F (90°C).
It should be kept away from sources of heat such as ovens, hot water, sunny car windows and open flames.

How to use

1. Indicate cutting line on YOGIPS if need.
2. Place YOGIPS in the heating machine and heat it.
3. Place soft YOGIPS over the desired point and wrap with an elastic bandage.
4. Mold YOGIPS until shaped to fit.
5. Remove elastic bandage and wrap with enclosed straps.



ORDERING INFORMATION

YOGIPS Premold type

Article Number	Size	Side	Order#
HSA-200	LARGE	RIGHT	M200011
HSA-200	LARGE	LEFT	M200012
HSA-200	MEDIUM	RIGHT	M200021
HSA-200	MEDIUM	LEFT	M200022
Article Number	Size	Side	Order#
HSA-220	LARGE	RIGHT	M220011
HSA-220	LARGE	LEFT	M220012
HSA-220	MEDIUM	RIGHT	M220021
HSA-220	MEDIUM	LEFT	M220022
HSA-220	SMALL	RIGHT	M220031
HSA-220	SMALL	LEFT	M220032
Article Number	Size	Side	Order#
HSA-300V	LARGE	RIGHT	M300111
HSA-300V	LARGE	LEFT	M300112
HSA-300V	MEDIUM	RIGHT	M300121
HSA-300V	MEDIUM	LEFT	M300122
HSA-300V	SMALL	RIGHT	M300131
HSA-300V	SMALL	LEFT	M300132
Article Number	Size	Side	Order#
HSA-300G	LARGE	RIGHT	M300211
HSA-300G	LARGE	LEFT	M300212
HSA-300G	MEDIUM	RIGHT	M300221
HSA-300G	MEDIUM	LEFT	M300222
HSA-300G	SMALL	RIGHT	M300231
HSA-300G	SMALL	LEFT	M300232

Article Number	Size	Side	Order#
HSA-300D	LARGE	RIGHT	M300311
HSA-300D	LARGE	LEFT	M300312
HSA-300D	MEDIUM	RIGHT	M300321
HSA-300D	MEDIUM	LEFT	M300322
HSA-300D	SMALL	RIGHT	M300331
HSA-300D	SMALL	LEFT	M300332
Article Number	Size	Side	Order#
HFS-1000	UNIVERSAL	UNIVERSAL	M100000
Article Number	Size	Side	Order#
HSA-230	UNIVERSAL	RIGHT	M230001
HSA-230	UNIVERSAL	LEFT	M230002
Article Number	Size	Side	Order#
HSA-320	LARGE	RIGHT	M320011
HSA-320	LARGE	LEFT	M320012
HSA-320	MEDIUM	RIGHT	M320021
HSA-320	MEDIUM	LEFT	M320022
HSA-320	SMALL	RIGHT	M320031
HSA-320	SMALL	LEFT	M320032
Article Number	Size	Side	Order#
HSA-420	LARGE	RIGHT	M420011
HSA-420	LARGE	LEFT	M420012
HSA-420	MEDIUM	RIGHT	M420021
HSA-420	MEDIUM	LEFT	M420022
HSA-420	SMALL	RIGHT	M420031
HSA-420	SMALL	LEFT	M420032

Article Number	Size	Side	Order#
HLA-500	LARGE	UNIVERSAL	M500010
HLA-500	MEDIUM	UNIVERSAL	M500020
HLA-500	SMALL	UNIVERSAL	M500030
Article Number	Size	Side	Order#
HSL-600	LARGE	UNIVERSAL	M600010
HSL-600	MEDIUM	UNIVERSAL	M600020
HSL-600	SMALL	UNIVERSAL	M600030
HSL-600	X-SMALL	UNIVERSAL	M600040
Article Number	Size	Side	Order#
HSL-640	UNIVERSAL	UNIVERSAL	M640000
Article Number	Size	Side	Order#
HLL-700	LARGE	UNIVERSAL	M700010
HLL-700	MEDIUM	UNIVERSAL	M700020
HLL-700	SMALL	UNIVERSAL	M700030
HLL-700	X-SMALL	UNIVERSAL	M700040
Article Number	Size	Side	Order#
HLL-740	LARGE	UNIVERSAL	M740010
HLL-740	MEDIUM	UNIVERSAL	M740020
HLL-740	SMALL	UNIVERSAL	M740030

YOGIPS Flat type

Article Number	Size	Side	Order#
HSA-200	UNIVERSAL	RIGHT	F200001
HSA-200	UNIVERSAL	LEFT	F200002
Article Number	Size	Side	Order#
HSA-220	LARGE	RIGHT	F220011
HSA-220	LARGE	LEFT	F220012
HSA-220	MEDIUM	RIGHT	F220021
HSA-220	MEDIUM	LEFT	F220022
HSA-220	SMALL	RIGHT	F220031
HSA-220	SMALL	LEFT	F220032

Article Number	Size	Side	Order#
HSA-300	LARGE	UNIVERSAL	F300010
HSA-300	MEDIUM	UNIVERSAL	F300020
HSA-300	SMALL	UNIVERSAL	F300030
Article Number	Size	Side	Order#
HSA-230	UNIVERSAL	RIGHT	F230001
HSA-230	UNIVERSAL	LEFT	F230002
Article Number	Size	Side	Order#
HFS-1000	UNIVERSAL	UNIVERSAL	F100000

Article Number	Size	Side	Order#
HSA-320	LARGE	RIGHT	F320011
HSA-320	LARGE	LEFT	F320012
HSA-320	MEDIUM	RIGHT	F320021
HSA-320	MEDIUM	LEFT	F320022
HSA-320	SMALL	RIGHT	F320031
HSA-320	SMALL	LEFT	F320032
Article Number	Size	Side	Order#
HSA-420	LARGE	RIGHT	F420011
HSA-420	LARGE	LEFT	F420012
HSA-420	MEDIUM	RIGHT	F420021
HSA-420	MEDIUM	LEFT	F420022
HSA-420	SMALL	RIGHT	F420031
HSA-420	SMALL	LEFT	F420032



Hygia Cast

(Polyester & Fiberglass available)



Hygia Cast offers all the strength, rigidity and durability.

This is comprised of a knitted fabric which features extensible yarns which shape easily to body contours, providing superior molding capabilities for both primary and secondary casting applications.

- Preventable from being damaged by the scattered particles
- Superior lamination
- Excellent conformability
- Improved finish for smoother and softer edges
- Less dust than fiberglass casting products
- Excellent X-ray radiolucency
- Encourage greater patient compliance given their vibrant colors and patterns
- Easily removed with a regular cast saw blade



Application Instructions



1. Slip one layer of stockinette over the affected body part.
2. Additional padding may be used for greater protection of pressure points and bony prominences.
3. Gloves must be worn.
4. Open only one roll of Hygia Cast at a time.
5. Immerse the roll in room temperature water.
Three firm squeeze of the roll while immersed will give a set time of approximately 3minutes.
To lengthen the set time, immerse the roll and remove it immediately without squeezing.
This will give you a set time of around 4minutes.
Warmer water shortens the set time while cooler water lengthens it.
6. Wrap spirally, taking care to avoid excessive tightness.
7. Smooth and rub the surface to achieve good contact between layers.
About 3~5minutes after immersion in the water, Hygia Cast is sufficiently cured to prevent further molding.

Product Information

Code No.	Size	Shipping Q'ty
WS-0011	2.5cm x 1.8m	1CTN(10boxes of 10rolls)
WS-002X	5cm x 3.6m	
WS-003X	7.5cm x 3.6m	
WS-004X	10cm x 3.6m	
WS-005X	12.5cm x 3.6m	

1-WHITE, 2-GREEN, 3-PINK, 4-BLUE, 5-RED, 6-YELLOW, 7-GREY, 8-BLACK, 9-PURPLE





Softpoly Cast

Softpoly Cast, semi-rigid, knitted fabric, impregnated with moisture-curable resin packed in a sealed foil pouch. It is intended for use when support is needed, but rigid immobilization is not required, such as in a wide variety of athletic injuries, pediatric corrective serial casting, secondary and tertiary casting for various orthopedic problems, and as a comprehensive wrap to control swelling.

They can be unwrapped, cut off with bandage scissors, or removed with a traditional cast saw.

- Easy to cut with a bandage scissors
- Easy to trim the cast
- Enough fixation to support
- Lightweight and thin
- Shoes can be worn with the cast on
- Suitable for a child in cast removal
- Convenient to wear the cast and take off by using straps
- Superior resiliency
- Smooth edges (no skin abrasion)



Softpoly Cast

Application Instructions



1. Slip one layer of stockinette over the affected body part.
2. Additional padding may be used for greater protection of pressure points and bony prominences.
3. Gloves must be worn.
4. Open only one roll of Softpoly Cast at a time.
5. Immerse the roll in room temperature water.
Three firm squeeze of the roll while immersed will give a set time of approximately 3~3.5 minutes.
To lengthen the set time, immerse the roll and remove it immediately without squeezing.
This will give you a set time of around 4 minutes.
Warmer water shortens the set time while cooler water lengthens it.
6. Wrap spirally, taking care to avoid excessive tightness.
7. Smooth and rub the surface to achieve good contact between layers.
About 3~5 minutes after immersion in the water, Softpoly Cast is sufficiently cured to prevent further molding.

Product Information

Code No.	Size	Shipping Q'ty
WS-SC0011	2.5cm x 1.8m	1CTN(10boxes of 10rolls)
WS-SC002X	5cm x 3.6m	
WS-SC003X	7.5cm x 3.6m	
WS-SC004X	10cm x 3.6m	
WS-SC005X	12.5cm x 3.6m	

1-WHITE, 2-GREEN, 3-PINK, 4-BLUE, 5-RED, 6-YELLOW, 7-GREY, 8-BLACK, 9-PURPLE



Hygia Belt Splint

Put on & take off easily with straps

Hygia Belt Splint is intended for use in the application of common orthopedic splints. It is comprised of multiple layers of a knitted fabric, impregnated with polyurethane resin. It is covered by air and moisture permeable non-woven fabric on both sides, which is served as padding.

- Superior ventilation
- Odor free all day long
- Free from tight elastic bandage
- Secured with straps
- Comfortable immobilization with straps
- Excellent molding capability



VS

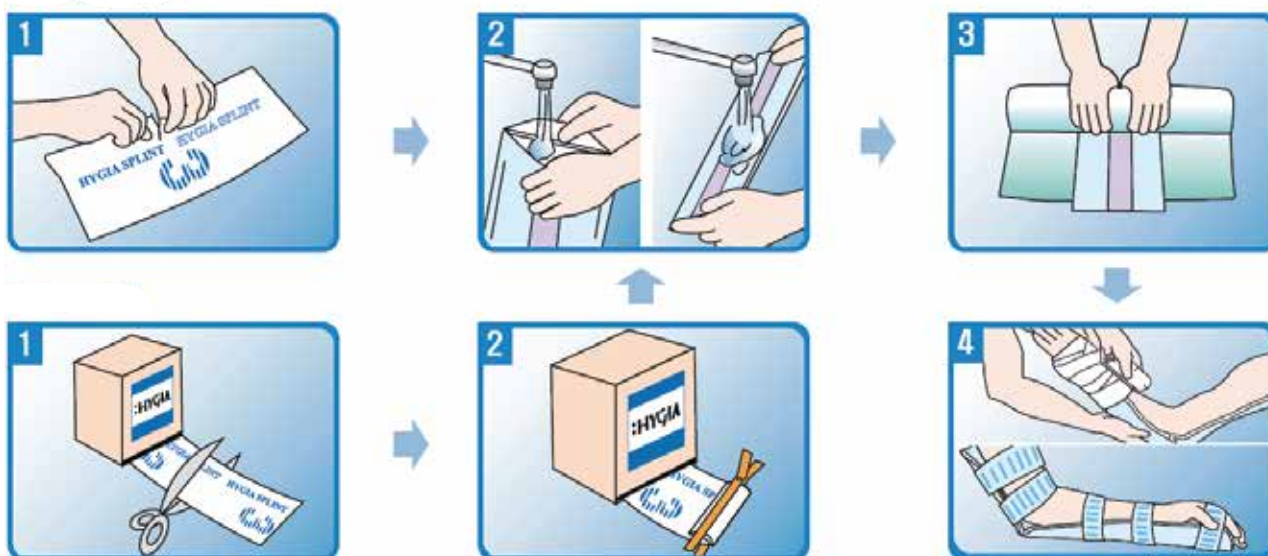


Normal splint

Hygia Belt splint

Hygia Belt Splint

Application Instructions



Pre-cut type

1. Choose the desired size for the affected body part.
Generally no gloves are necessary.
2. Open the product and take out multiple layers of Hygia Belt Splint and pour or spray water on the blue pad of the Hygia Belt Splint in the room temperature water.
This will give a set time of approximately 4~5minutes.
Warmer water shortens the set time while cooler water lengthens it.
3. Get rid of the water on the Hygia Belt Splint with a dry towel to provide more comfort on the affected body part of a patient.
4. Wrap with a roll of elastic bandage to secure and mold it freely.
Secured with straps.

Roll type

1. Take out Hygia Belt Splint covered with long sealed foil pouch from the box, measure the length to apply, cut off with a bandage scissors.
2. Seal up immediately with a clip (sealing bar) provided inside each box to prevent air or moisture from coming inside the package.
3. Open the product and take out multiple layers of Hygia Belt Splint and pour or spray water on the blue pad of the Hygia Belt Splint in the room temperature water.
This will give a set time of approximately 4~5minutes.
4. Get rid of the water on the Hygia Belt Splint with a dry towel to provide more comfort on the affected body part of a patient.
5. Wrap with a roll of elastic bandage to secure and mold it freely.
Secured with straps.

Product Information

Pre-cut type

Code No.	Size	Shipping Q'ty
WS-3011	5cm x 25cm	1CTN(10boxes of 5pcs)
WS-3012	7.5cm x 30cm	1CTN(10boxes of 5pcs)
WS-3021	10cm x 37.5cm	1CTN(10boxes of 5pcs)
WS-3022	7.5cm x 87.5cm	1CTN(6boxes of 5pcs)
WS-3031	10cm x 75cm	1CTN(6boxes of 5pcs)
WS-3032	12.5cm x 75cm	1CTN(6boxes of 5pcs)
WS-3041	12.5cm x 112.5cm	1CTN(6boxes of 5pcs)

Roll type

Code No.	Size	Shipping Q'ty
WS-3051	5cm x 450cm	1CTN(6boxes)
WS-3052	7.5cm x 450cm	1CTN(6boxes)
WS-3053	10cm x 450cm	1CTN(6boxes)
WS-3054	12.5cm x 450cm	1CTN(6boxes)
WS-3055	15cm x 450cm	1CTN(6boxes)





Hygia Splint

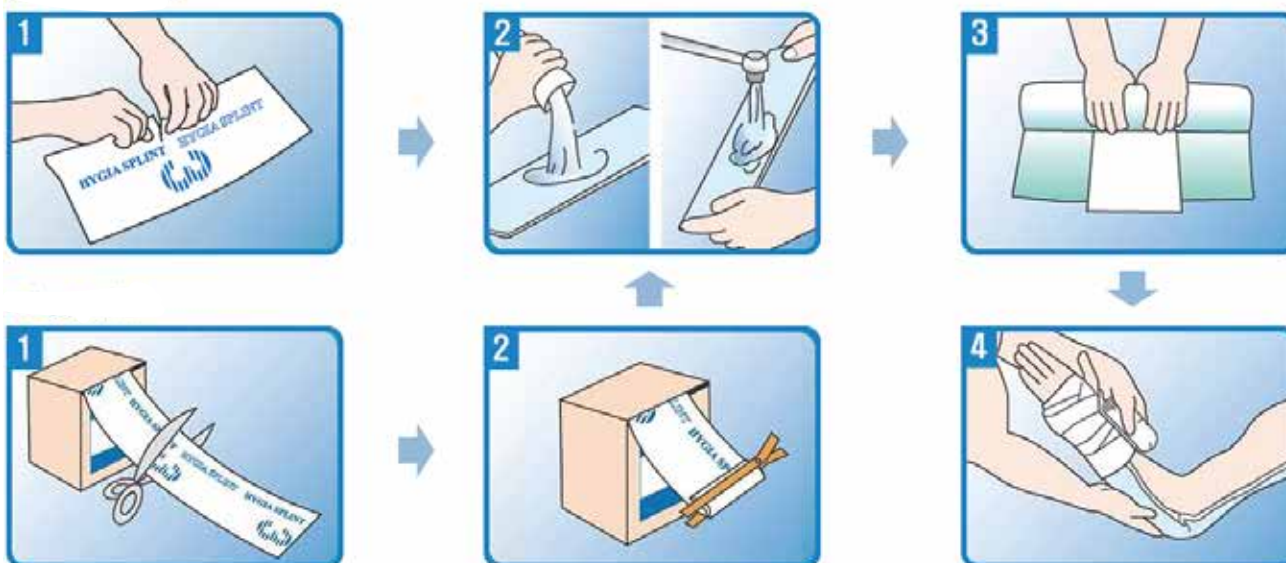
Hygia Splint, consist of multiple layers of knitted fabric, impregnated with moisture-curable resin, must have double-sized padding, exposure of splint to moisture of water initiates a chemical reaction, which causes the splint to become rigid, highly comfortable, water-repellent, lightweight.

Setting time: ± 4 min, Fuctional strength ± 20 min, individually wrapped in a sealed foil pouch

- Lightweight
- Various sizes
- Cost-efficient
- X-ray translucent
- Strong and rigid
- Burnable after use
- Excellent molding capability
- Dry and comfortable



Application Instructions



Pre-cut type

1. Choose the desired size for the affected body part.
Generally no gloves are necessary.
2. Open the product and take out multiple layers of Hygia Splint and pour or spray water on the blue pad of the Hygia Splint in the room temperature water.
This will give a set time of approximately 4~5minutes.
Warmer water shortens the set time while cooler water lengthens it.
3. Get rid of the water on the Hygia Splint with a dry towel to provide more comfort on the affected body part of a patient.
4. Wrap with a roll of elastic bandage to secure and mold it freely.

Roll type

1. Take out Hygia Splint covered with long sealed foil pouch from the box, measure the length to apply, cut off with a bandage scissors.
2. Seal up immediately with a clip (sealing bar) provided inside each box to prevent air or moisture from coming inside the package.
3. Open the product and take out multiple layers of Hygia Splint and pour or spray water on the blue pad of the Hygia Splint in the room temperature water.
This will give a set time of approximately 4~5minutes.
4. Get rid of the water on the Hygia Splint with a dry towel to provide more comfort on the affected body part of a patient.
5. Wrap with a roll of elastic bandage to secure and mold it freely.

Product Information

Pre-cut type

Code No.	Size	Shipping Q'ty
WS-1011	5cm x 25cm	1CTN(10boxes of 5pcs)
WS-1012	7.5cm x 30cm	1CTN(10boxes of 5pcs)
WS-1021	10cm x 37.5cm	1CTN(10boxes of 5pcs)
WS-1022	7.5cm x 87.5cm	1CTN(6boxes of 5pcs)
WS-1031	10cm x 75cm	1CTN(6boxes of 5pcs)
WS-1032	12.5cm x 75cm	1CTN(6boxes of 5pcs)
WS-1041	12.5cm x 112.5cm	1CTN(6boxes of 5pcs)

Roll type

Code No.	Size	Shipping Q'ty
WS-1051	5cm x 450cm	1CTN(6boxes)
WS-1052	7.5cm x 450cm	1CTN(6boxes)
WS-1053	10cm x 450cm	1CTN(6boxes)
WS-1054	12.5cm x 450cm	1CTN(6boxes)
WS-1055	15cm x 450cm	1CTN(6boxes)

