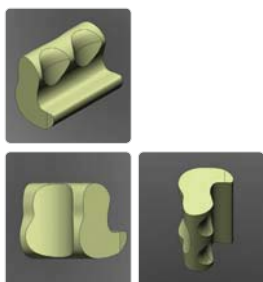


Shoulder/Elbow Braces



Shoulder B-Sling(New)



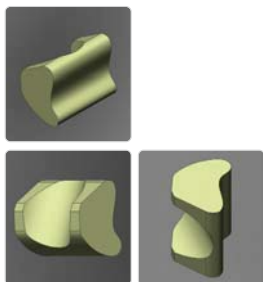
Size S / M / L

Indication

- Post-operative immobilization after shoulder joint surgery
- Reconstruction after rotator cuff ruptures
- Shoulder impingement syndrome

Function

- Ergonomically designed and provide secure position
- Active and passive mobilization of hand, wrist and elbow for post operative
- The squeeze ball increases blood circulation and muscle strength following shoulder surgery



Shoulder B-Sling



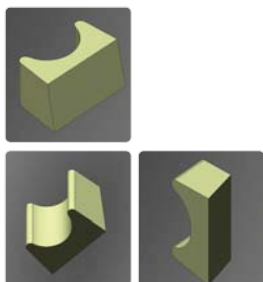
Size S / M / L

Indication

- Post-operative immobilization after shoulder joint surgery
- Reconstruction after rotator cuff ruptures
- Shoulder impingement syndrome

Function

- Ergonomically designed and provide secure position
- Active and passive mobilization of hand, wrist and elbow for post operative
- The squeeze ball increases blood circulation and muscle strength following shoulder surgery



O-Sling



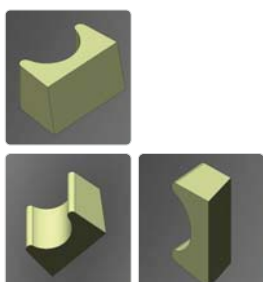
Size	Width (cm)	Length (cm)	Height (cm)	Arm/Weight (cm/g)
S	30	11	17	36 / 412
M	31	15	18	39 / 452
L	37	15	22	40 / 506

Indication

- Post-operative immobilization after shoulder joint surgery
- Reconstruction after rotator cuff ruptures

Function

- Decrease anti-inflammatory medication
- Decrease pain symptoms



Shoulder O-Sling



Size	Width (cm)	Length (cm)	Height (cm)	Arm/Weight (cm/g)
S	30	11	17	36 / 440
M	31	15	18	39 / 478
L	37	15	22	40 / 532

Indication

- Post-operative immobilization after shoulder joint surgery
- Reconstruction after rotator cuff ruptures

Function

- Decrease anti-inflammatory medication
- Decrease pain symptoms

L-Sling



Size	Width (cm)	Length (cm)	Height (cm)	Weight (cm/g)
Free	34	14	13	39.5

Weight : 478g



Ultra-Sling



Size	Width (cm)	Length (cm)	Height (cm)	Weight (cm/g)
Free	33	13.5	13	38.5

Weight : 412g



Indication

- Post-operative immobilization after shoulder joint surgery
- Reconstruction after rotator cuff ruptures
- Shoulder impingement syndrome

Function

- Control elbow immobilization
- Decrease anti-inflammatory medication
- Decrease pain symptoms



Hemi-Sling

Size S / M / L



Indication

- Shoulder instability
- Shoulder strain/sprain
- Soft tissue injury

Function

- Shoulder support with detachable chest strap can be easily adjusted to provide comfortable fit



Bobath-Sling

Size Free



Indication

- Prevention or treatment of the pain in hemiplegic shoulder
- Prevention or treatment of shoulder subluxation

Function

- Reduce shoulder pain



Kenny Howard

Size S / M / L / XL



Indication

- Shoulder subluxation
- Shoulder contusion
- Shoulder sprain
- Fracture Rotator cuff

Function

- Reduce percent of re-subluxation
- Maintenance of fixation after shoulder joint subluxation



Long Arm Brace (Single/Double)

Size Free

Double



Indication

- Post operative immobilization
- Conservative treatment of elbow dislocation or luxation
- Stable or internally fixed fracture of the distal humerus or proximal radius

Function

- Limit ROM by adjustable simple setting hinges

Single



Tennis Elbow

Size S / M / L



Indication

- Lateral epicondylitis
- Medial epicondylitis



Tennis Elbow (Ottobock)

Size Free



Indication

- Lateral epicondylitis
- Medial epicondylitis