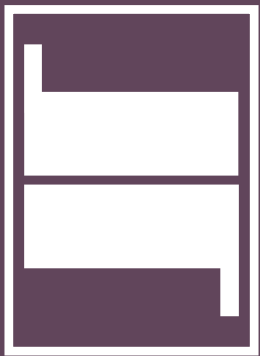


Comprehensive Hand and Extremity EVALUATION SYSTEM

JTECH·MEDICAL
MEASURING HUMAN PERFORMANCE



Tracker Freedom CHE

COMPREHENSIVE HAND AND EXTREMITY EVALUATION (CHE) SYSTEM

Tracker Freedom CHE System brings state-of-the-art instruments and software together into one comprehensive and flexible system. After years of detailed clinical review and input from hand therapists, Tracker Freedom CHE was developed to make documentation and evaluation seamless. Tracker Freedom CHE saves you time and transcription costs and is more cost effective than other systems.

RELIABLE WIRELESS ASSESSMENT TOOLS

Tracker Freedom CHE uses instruments that look familiar and feel comfortable to the examiner, but do much more than other similar devices. Based on the most advanced and reliable technology available, Tracker Freedom CHE instruments instantly transmit data to our revolutionary Tracker Version 5 software for immediate readings, progress tracking and reporting.

WIRELESS FOOT SWITCH



The Tracker Freedom Wireless Foot Switch provides hands-free test-advance and enter

5.5" L x 7.25" W x 1.50" D
Weight 1.34 pounds

WIRELESS ADVANTAGE

- Test up to 30 feet from the computer
- Data accuracy ensured with two-way technology
- Frequency hopping avoids interference
- Real-time data transfer
- USB receiver connection
- Rechargeable batteries

WIRELESS GONIOMETER



10.75" L x 1.50" W x 1.65" D • Weight 0.26 pounds • Measures from 0° to 270°, plus or minus 2°

The Tracker Freedom Goniometer breezes through range of motion (ROM) evaluations. It's as easy as positioning the patient and pushing a button to record each measurement. There's no stopping to record results and no repositioning the patient in between measurements, saving you time and reducing potential errors. The Tracker Freedom Wireless Goniometer features snap-on extremity extensions for larger joints and measures in 1° increments.

WIRELESS PINCH



4.27" L x 2.10" W x 1.00" D • Weight 0.36 pounds • Measures up to 50 lbs in 0.2 pound increments

The Tracker Freedom Pinch Gauge offers fast, accurate and reliable pinch testing including key (lateral), palmar (chuck), and tip pinch testing. Durability and convenience make it an indispensable component of the complete Tracker Freedom CHE system.

WIRELESS GRIP



8.20" L x 1.45" W x 3.85" D • Weight 0.86 pounds • Measures up to 200 lbs in 1 pound increments

The Tracker Freedom Grip Dynamometer surpasses all others in durability and ease of use. It features a standard five-rung configuration compatible with published normative values and measures up to 200 lbs. Digital load cell technology makes this dynamometer more durable and provides consistent, accurate results. At less than 1lb, it is well balanced for more manageable testing and easier rapid exchange grip (REG) test administration.

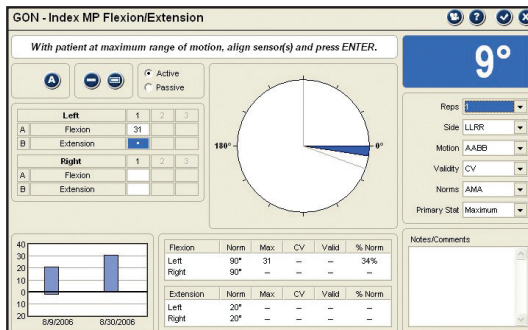
Tracker Freedom CHE

Tracker Version 5 software is the engine that powers Tracker Freedom CHE and gives you capabilities that far surpass other systems. Tracker Version 5's intuitive user interface makes testing and documentation fast, easy and complete.

INDUSTRY-LEADING TRACKER VERSION 5 SOFTWARE

Tracker Version 5 software is loaded with features designed to save you time and provide you with unprecedented flexibility. Test results and progress graphs are displayed instantly at the testing screen along with bilateral comparisons, normative comparisons and coefficient of variation (CV) calculations so you can make quick decisions. When a standard test isn't what you need, you can easily create custom tests and save them for future use.

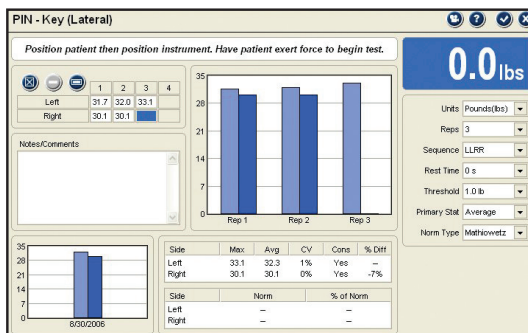
TRACKER VERSION 5 GONIOMETER



- Document up to 3 measurements per motion per side
- Identify motion lag with negative numbers
- Document and determine measurements for joint ankylosis
- Active and passive Range of Motion (ROM)
- Composite finger and Tip-to-Distal Palmar Crease (Tip-to-DPC) protocols
- Evaluate upper and lower extremities

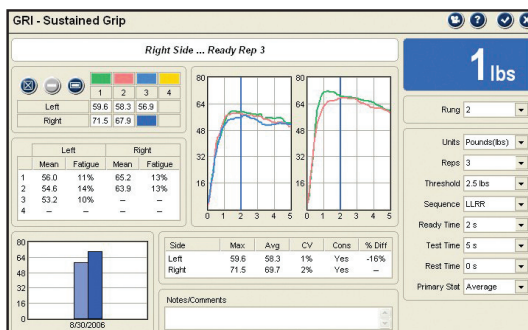


TRACKER VERSION 5 PINCH



- Includes Key (Lateral), Palmar (Chuck), Tip and Thumb Opposition pinch test protocols
- Up to four repetitions per test
- Adjustable test thresholds and unit of measure
- Set rest times from 0 to 60 seconds between repetitions

TRACKER VERSION 5 GRIP



- Maximum grip test, 5-position grip test and rapid exchange grip (REG) test protocols
- Sustained grip test with real-time force curves and automatic fatigue calculation
- Multi-max grip test follows AMA Guides protocol for effort evaluation
- Up to four repetitions per side
- Adjustable test thresholds and unit of measure
- Set rest times from 0 to 60 seconds between repetitions

INTEGRATED MULTIMEDIA HELP SYSTEM

One button click at the testing screen launches a video demonstration with audio explanation of any standard test.

- Educate patients and help them feel comfortable with the testing you are about to perform
- Achieve higher inter-tester and intra-tester reliability
- Train new examiners
- Use as a reference to ensure proper testing technique

Tracker Freedom CHE Software

SAVE TIME WITH QUICK-CLICK DOCUMENTATION

The Tracker Freedom CHE system for hand and upper extremity evaluation features an advanced user interface we call Quick-Click. The highly efficient and flexible tool is another feature of Tracker Freedom CHE designed to reduce exam time and increase productive treatment time. Our user-friendly Quick-Click interface provides point-and click and fill-in-the-blank functionality for much greater efficiency than paper forms. It also allows you to customize the terminology used in the software forms to meet your specific needs. For faster follow-up exams, we've added innovative features like "last exam recall." Simply click once, mark what's changed and your documentation is done! Or with one button click, the software recalls the patient's previous exam sequence and walks you through it for quick and easy re-evaluations.

COMPREHENSIVE, INTUITIVE EVALUATION FORMS

Tracker Freedom CHE comes with our Comprehensive Hand Evaluation (CHE) Module. It was designed with practicing hand clinicians referencing the American Society of Hand Therapists (ASHT) Clinical Guidelines. Intuitive navigation lets you move between evaluation screens with minimal clicks and each screen offers features based on the type of condition or area being evaluated. For example, edema and lymphedema screens automatically calculate the difference from the uninvolved side while the wound and scar screens calculate the surface area.

DOCUMENT YOUR ENTIRE EVALUATION

- Observations
- Function
- Skin
- Nails
- Burns
- Wounds
- Scars
- Lymphedema
- Edema (volumetric and circumferential)
- Splints
- Sensory mapping (digital nerves and dermatomes)
- Provocative orthopedic tests
- Pain scales and mapping
- Deep tendon reflexes
- Questionnaires scoring

Tracker Version 5 software also includes patient-related documentation for work status, patient complaints and medical history.

The lymphedema screen automatically calculates the difference between the involved and uninvolved side. Recall uninvolved data in re-exams for consistent progress comparisons.

Sensory mapping is quick and easy. Simply choose a color code then click and drag over the appropriate segments of the hand. Document palmar and dorsal sensory results from Static 2-Point, Moving 2-Point and Mono filament exams.

Tracker Freedom CHE Reports

Quality reports save the therapist and the doctor valuable time and aid in quick, well-informed decision making. Tracker Version 5 reports give you the flexibility to create comprehensive narrative reports and summary worksheets with charts and graphs that are easy to read at a glance. Creating custom reports is simple and you can save the order of any report as a template for repeated use. Recall your report template any time with just a few clicks and customize it on the fly when you need to. It's a great way to standardize your clinic's reports and meet the reporting requirements of referrals. Reports can be generated at the conclusion of your exam so you can quickly review them and even send them with the patient.

CUSTOMIZED REPORTING MADE EASY

Creating custom reports is simple and you can save the order of any report as a template for repeated use. Recall your report template any time with just a few clicks and customize it on the fly when you need to. It's a great way to standardize your clinic's reports and meet the reporting requirements of referrals.

Narrative Reports



Narrative Reports

These reports open in Microsoft Word®, giving you outstanding flexibility to add text and objects, change fonts, layout and more. Organize the report around any information you want, including progress charts, graphs and custom text. Share Narrative Reports electronically with anyone who has Microsoft Word®

Additional reports present your findings in a concise chart format. The Tracker Version 5 Rapid Report Interface allows you to quickly arrange reports in any order.

AUTOMATIC PROGRESS TRACKING

We understand how vital demonstrating progress and outcomes is in today's health care environment. Tracker Version 5 provides a variety of ways to show progress to doctors, patients and payers.

- Progress graphs in all objective testing screens
- Analyze Data screens for reviewing progress and associated statistics
- Progress reports with bar graphs
- Progress report tables showing recent and overall change

Tracker Freedom CHE

Expand your Evaluation Capabilities

Tracker Freedom CHE's modular design gives you the latitude to customize and expand your system. With Tracker Freedom CHE, you can start with the components that meet your needs and your budget today, then add to your system over time as your needs change. Expand your system to include functional capacity, spine ROM, pain and impairment evaluations, and much more.

With optional components and software, you can mix-and-match Tracker Freedom hardware, and Tracker 5 software modules to meet your needs and expand your hand and upper extremity evaluation capabilities.

OPTIONAL MODULES AND DEVICES

AMA IMPAIRMENT RATING MODULE

Licensed by the American Medical Association (AMA), the optional AMA Impairment Rating Module streamlines the process of evaluating and calculating impairments in accordance with the Guides to the Evaluation of Permanent Impairment, Fifth Edition. The software calculates impairment using your exam results in strict adherence to the AMA Guides. It then creates detailed narrative and AMA Guides-based worksheet reports, complete with references and page numbers.

	ROM	Ankylosis		Impairment
<input checked="" type="checkbox"/> Index MP Flexion	21		<input type="checkbox"/>	37%
<input checked="" type="checkbox"/> Index MP Extension	2		<input type="checkbox"/>	4%
<input checked="" type="checkbox"/> Index PP Flexion	37		<input type="checkbox"/>	37%
<input checked="" type="checkbox"/> Index PP Extension	-3		<input type="checkbox"/>	0%
<input checked="" type="checkbox"/> Index DIP Flexion	30		<input type="checkbox"/>	21%
<input checked="" type="checkbox"/> Index DIP Extension	2		<input type="checkbox"/>	0%

Rate Using Total Active ROM (TAROM) Flexion Extension

Combined Flexion - Extension Impairments Digit Impairment Hand Impairment

71% 14%

ROM impairments for a joint are added then combined with motion impairments for other joints within the digit. ROM impairments cannot be combined with synovial hypertrophy, persistent subluxation/dislocation, or musculotendinous impairments (p. 499).

Notes/Comments

Impairment Rating

8 (13)

OBJECTIVE MUSCLE TESTING

JTECH's optional wireless muscle testing provides a more objective, defensible standard for evaluating strength loss using a hand-held dynamometer. Tracker Version 5 Muscle Testing Software provides real-time force curves, innervations associated with tests for determining neurological involvement, and grading capabilities as required by the AMA Guides.

4.05" L x 2.40" W x 1.90" D • Weight 0.36 pounds • Measures up to 125 lbs in 1 pound increments



OBJECTIVE PAIN EVALUATION

Fast reliable computerized assessment of pain thresholds, trigger points, joint tenderness and pain tolerance. Pain thresholds and trigger point evaluation provide important information for diagnosis, treatment planning and progress tracking for fibromyalgia and other soft-tissue pain syndromes. A useful tool in understanding a patient response to pain.

1.80" L x 2.85" W x 2.95" D • Weight 0.36 pounds • Measures up to 25 lbs in 0.1 pound increments



JTECHMEDICAL
MEASURING HUMAN PERFORMANCE

(800) 985-8324
(801) 478-0680
www.jtechmedical.com

470 LAWNSDALE DR., Suite G.
SALT LAKE CITY, UT 84115